

INSTRUMENT APPROACH CHART

**AERODROME ELEV 435
HEIGHTS RELATED TO
THR RWY 29 - ELEV 387**

EAST LONDON

(Cat A - D)

VOR Y Rwy 29

FAEL

BEARINGS ARE MAGNETIC
ALTITUDES, ELEVATIONS
AND HEIGHTS IN FEET.
DISTANCES IN NM.

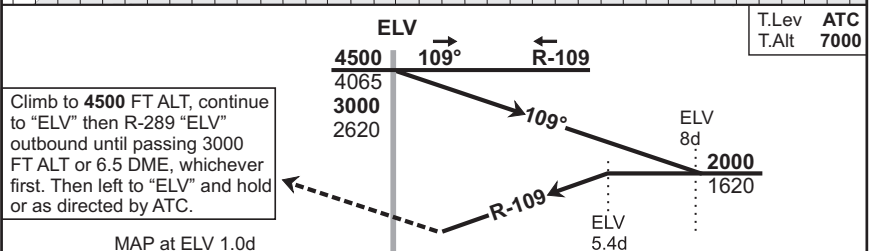
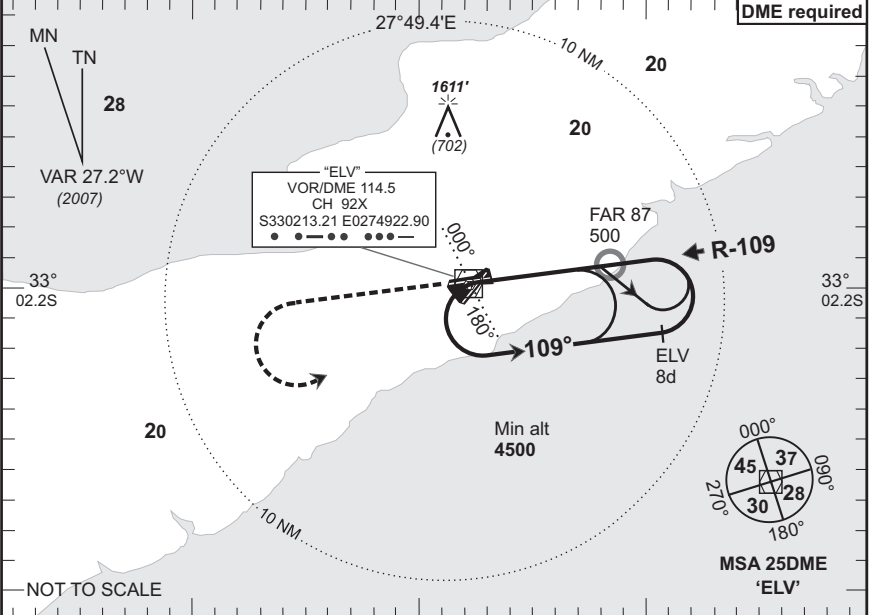
**EAST LONDON Approach
120.1**

**Tower
118.3**

**Apron
122.65**

**ATIS
126.65**

**VOR-03
EFF
03 Jul 08**



1. Initial approach altitude 4500 or higher MSA.
2. Procedure turn approach applicable only within 30° of the outbound heading. Use phraseology "Request procedure turn approach".
3. RoD computes at 3° angle of descent.
4. Circle to land at the discretion of the pilot in command.
5. OCH @ min 2.5% climb gradient Cat A - D 673

OCA/H					"ELV" 5.4d - THR						
Cat of ACFT	A	B	C	D	Speed	Kt	80	100	120	140	160
Straight	1060(673)	1060(673)	1060(673)	1060(673)	Time	M:s	3:41	2:57	2:27	2:06	1:50
-in					Rate of Descent	Fpm	420	530	640	740	850
Approach					"ELV" VOR/DME	5.4d	5d	4d	3d		
Circling					Advisory Alt/Hgt	2000(1613)	1870(1483)	1550(1163)	1230(843)		
Rev: VAR & FAD-190 Removed											WGS-84

CAA South Africa